



Vectron Systems AG – Data sheet

External Keyboard K10R

July 2006

Technical data – Hardware

- Keyboard with 128 programmable keys (8 rows x 16 columns)
- Connection: two internal Tipro bus connectors (left and right)
- Power consumption: typ. 15 mA

Keys

- Type: Cherry MX
- Service life of keys: 1×10^9 operations
- Key travel: $4^{+0.0}_{-0.4}$ mm
- Actuating force: 60 ± 20 cN

- Minimum operating temperature: -40°C
- Maximum operating temperature:
 - + 40°C high humidity environments (80% RH)
 - + 60°C medium humidity environments (10-80% RH)
 - + 85°C low humidity environments (<10% RH)

Shipment

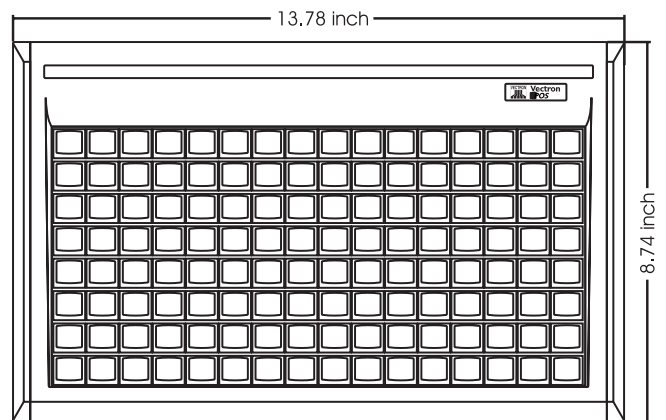
Shipment of the external keyboard Vectron K10R comprises:

- Vectron K10R (raised keyboard)
- Key caps
- PS/2-connection cable
- CD with drivers and programming software
- Brief instructions
- Dispatch box

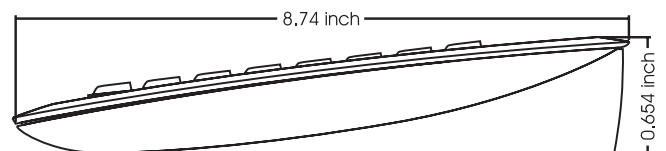
Weight

- approx. 1200 g

Dimensions



View from top



Side view





Vectron Systems AG – Data sheet

External keyboard K10F

July 2006

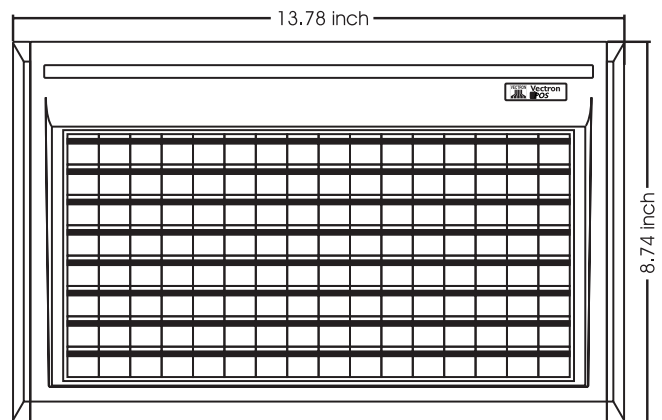
Technical data – Hardware

- Keyboard with 128 keys and protection cover (8 rows x 16 columns)
- Mechanical OMRON switch with double membrane protection (lower for keyboard, upper for label sheet)
- Connection: two internal Tipro bus connectors (left and right)
- Power consumption: typ. 15 mA

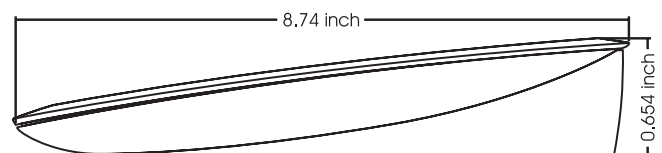
Keys

- Type: OMRON B3F-4005
 - Service life of keys: min. 1×10^6 operations
 - Key travel: $0,3^{+0,2}_{-0,1}$ mm
 - Actuating force: 255 ± 69 cN
-
- Minimum operating temperature: -40° C
 - Maximum operating temperature:
 - + 40° C high humidity environments (80% RH)
 - + 60° C medium humidity environments (10-80% RH)
 - + 85° C low humidity environments (<10% RH)

Dimensions



View from top



Side view

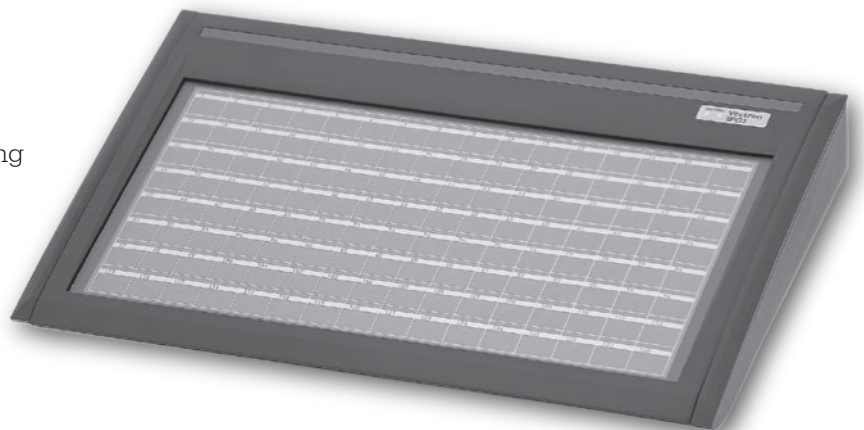
Shipment

Shipment of the external keyboard Vectron K10F comprises:

- Vectron K10F (flat keyboard)
- Key caps
- PS/2-connection cable
- CD with drivers and programming software
- Brief instructions
- Dispatch box

Weight

- approx. 1280 g



Vectron

Leading in POS Technology